



IRISH CASING
COMPANY

ABOUT US



In the 1960's a young entrepreneur, Claus Jurgen Kersting was visiting Ireland in search of raw material for his German company, Marth Naturdarme. This German company produces natural casings for the Sausage industry and exports worldwide. The raw material is a natural product sourced from abattoirs, of which Ireland has many. During his visit, he saw the potential to develop his business in Ireland and in 1970 he started discussions with the I.D.A. He chose Tullamore because its central position in Ireland and close proximity to the meat abattoirs, allowing access to raw material and also convenient for distribution, made it an ideal location to build up this new venture. Another favourable factor was the availability of a young workforce in Tullamore and the surrounding area. With this in mind, he purchased a site in Spollanstown Industrial Estate with the intention of building a factory selecting natural sausage casings. The factory was completed and, in May 1972, Irish Casing Company was established in Tullamore.

The company went from strength to strength, exporting casings all over the world and in the early 1980's expanded its operation into producing offal and meat products, employing in excess of 300 workers throughout Ireland. Forty years later, through the endeavours of dedicated management and staff, it has developed into one of the very successful enterprises in Ireland. Our products are produced and packaged under our own brand name. The Irish Casing shamrock is now recognised in many countries throughout the world and our high profile products are much sought after.

The company has strategic alliances in Germany, Poland, UK and Iceland. Irish Casing Company now has over 170 employees in Ireland and a further 150 employed in Iceland, Egypt, Poland and China, who work in teams for selection of sheep and pork casings, derived from raw material harvested in Ireland, throughout the EU and New Zealand. A recent development over the past few years has been an alliance with the abattoirs of Iceland. A close bond has been forged between them and Irish Casing Company.

Most of our raw materials are sourced from beef / pork / lamb plants in the Republic of Ireland which are all EU approved establishments, working under strict hygienic conditions supervised by the Department of Agriculture.

Attention to quality, service and after sales support, gave Irish Casing Company a good reputation in the market for many years, which is setting a benchmark for its competitors. The trade considers us as experts in our field and trust in our ability to produce and supply high quality products, suitable to the market needs. The company's main export markets are Europe, Africa, China, Hong Kong, Singapore, Japan, Korea and other Far East countries.

The company is constantly moving in new directions and expanding its market share throughout the world. We are a vibrant enterprise and continue to grow and develop, and have become a considerable force within the global meat industry.

CONTACT

IRELAND

Spollanstown Ind. Estate,
Tullamore,
County Offaly,
Rep. of Ireland

Tel: 353-5793-21714,
Fax: 353-5793-51306,
Email: info@irishcasings.com
Web: www.irishcasings.com

GERMANY

RUDOLF MARTH
Inh. C. J. Kersting e.K.
Böttgerstr. 7, 38122 Braunschweig
Postfach 6780, 38058 Braunschweig

Tel: +49 0531 - 874101
Fax: +49 0531 - 872914
Email: info@marth.de
Web: www.marth.de

POLAND

Noworim Sp. z o.o.
ul. Sienkiewicza 7c
PL - 72-200 Nowogard, Poland
Selectors for Sheep and
Hog-Casings, Tubing

Tel: +48 (91) 3922-394
Fax: +48 (91) 3922-018
Email: biuro@noworim.pl

ICELAND

Icelandic Byproducts Ltd,
Grimseyjargata,
600 Akureyri,
Iceland

Tel: +354 460 8850
Fax: +354 460 8854

AKUREYRI ICELAND TULLAMORE IRELAND BRAUNSCHWEIG GERMANY NOWOGARD POLAND



CONTENTS



BEEF 1 - 10



SHEEP 11 - 15



PORK..... 16 - 19



CASINGS 20 - 23

BEEF





Beef Tripe



Beef Diced Tripe



Beef Tripe with Honeycomb



Beef Honeycomb



Beef Whole Reed



Beef Diced Reed



Beef Omasum



Beef Omasum Packed



Beef CW Omasum



Beef CW Tripe



Beef Reed Crown



Beef CW Reed



Beef Feet Front



Beef Feet Hind



Beef Skin



Beef Skin on Tendon



Beef White Mask



Beef Scalded Mask



Beef Ear with Core



Beef Ear without Core



Beef Sinew



Beef Tails



Beef Snout



Beef Lips



Beef Gullet



Beef Liver



Beef Heart



Beef Lung Lobe



Beef Kidney



Green Mountain Chain



Beef Aorta



Beef Rib Finger



Beef Muscle



Beef Muscle



Beef Pizzle



Beef Testicle



Beef Diaphragm Membrane



Beef Flank Membrane



Beef Flexor Tendon



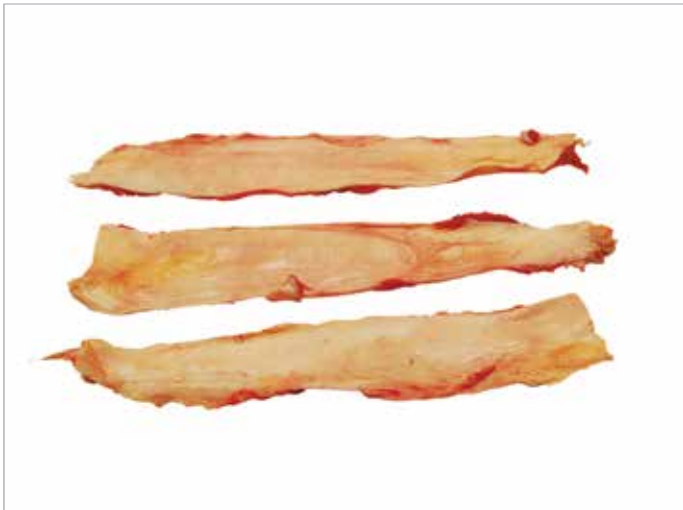
Beef Brisket Fat



Beef Short Tendon



Beef Paddywack



Beef Silverskin



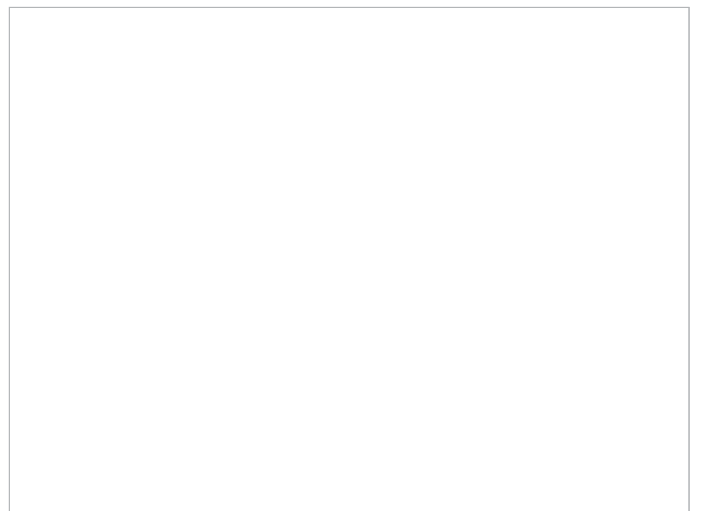
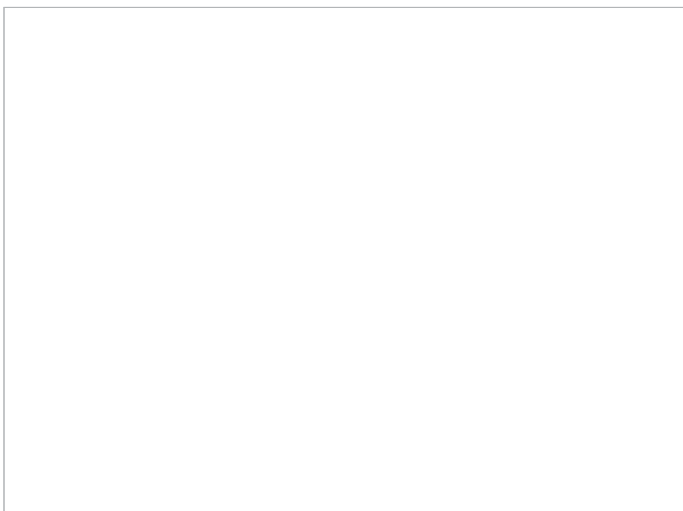
Beef Backstrap



Beef Achilles Tendon



Beef Mixed Tendon





Beef Diced Snout



Beef Diced Feet



Beef Diced Tripe



Beef Diced Honeycomb



Beef Diced Reed



Beef Diced Gullet

SHEEP





Lamb Heads



Lamb Singed Head



Lamb Feet



Lamb Singed Feet



Lamb CW Tripe



Lamb Sinew



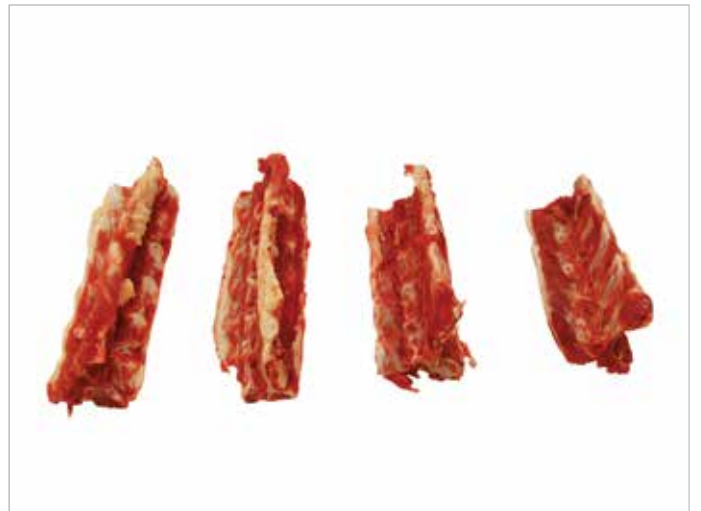
Lamb Breast Bone



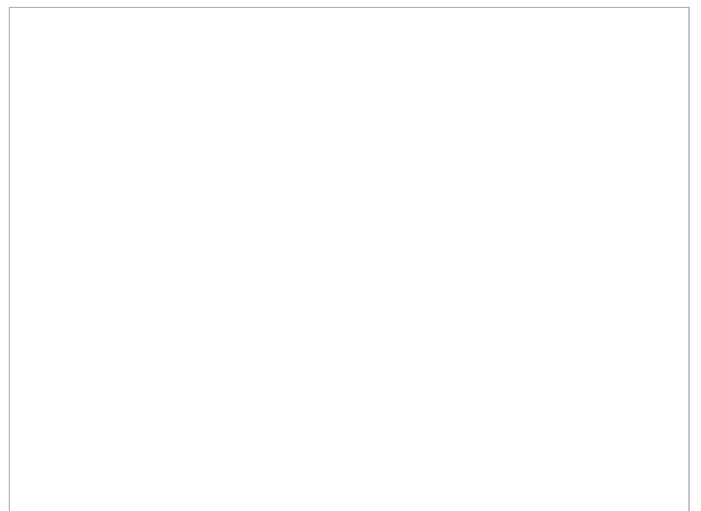
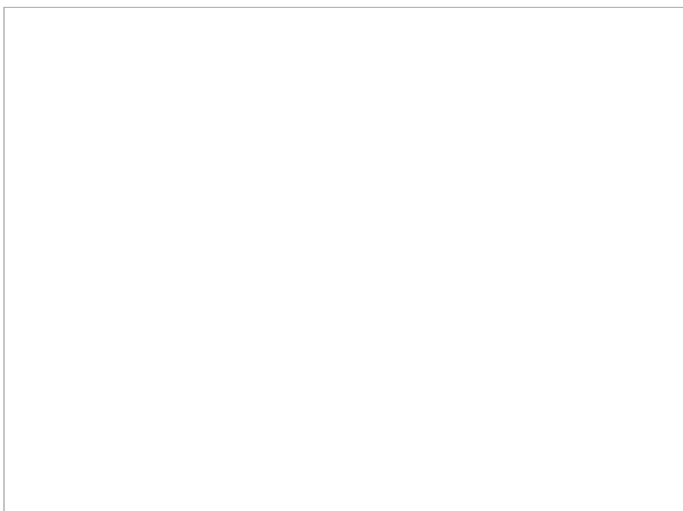
Lamb Rib Bone



Lamb Lung Lobe



Lamb Saddle Bone





Lamb Scalded Tripe



Lamb Flap Bone In



Lamb Spare Rib



Lamb Neck Bone



Lamb Kidney Fat On



Lamb Moon Bone



Lamb Paddywack



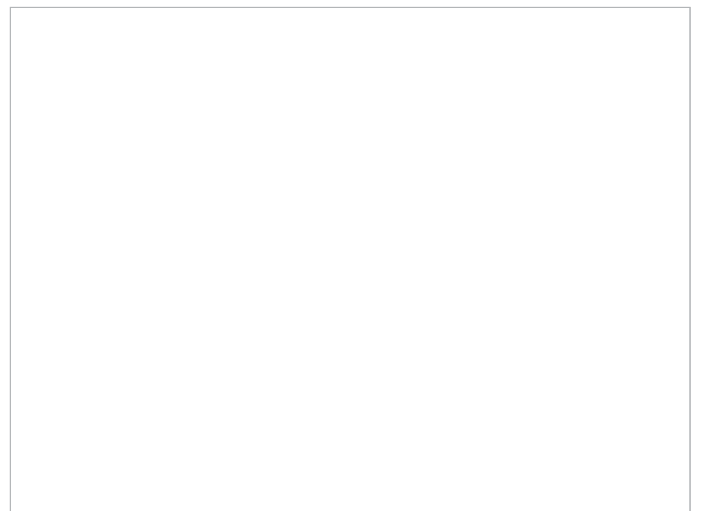
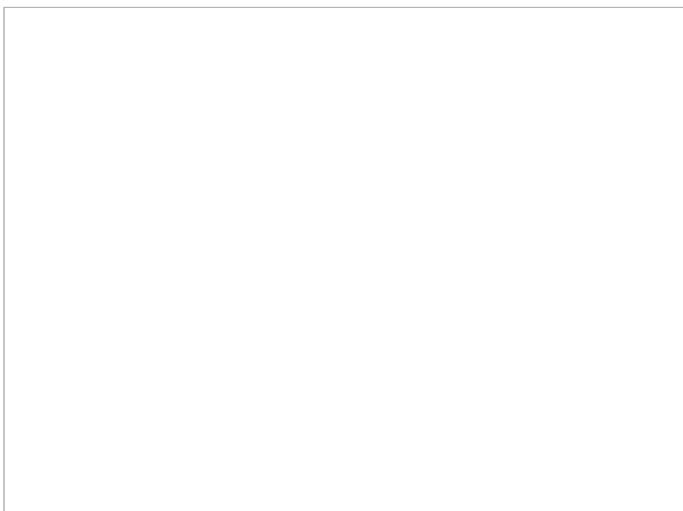
Lamb Achilles Tendon



Lamb Pizzle



Lamb Testicle





IRISH CASING COMPANY

PORK





Pork Cooked Stomach



Pork Cooked Stomach Packed



Pork Raw Stomach



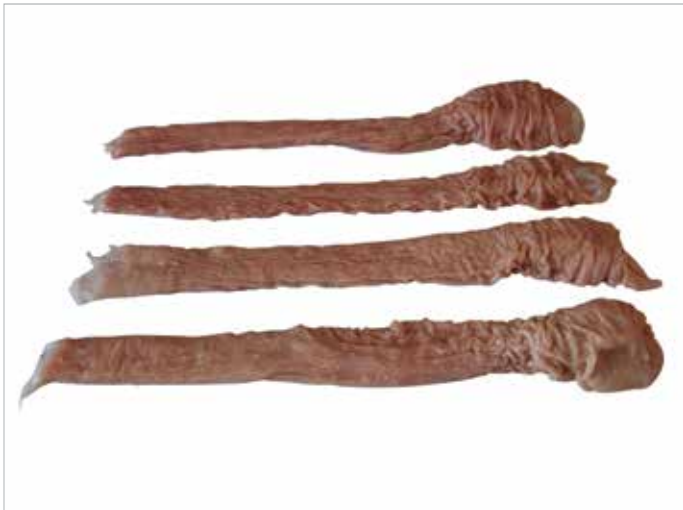
Pork Butterfly Stomach



Sow Cooked Stomach



Sow Raw Stomach



Pork Raw Rectum



Pork Cooked Rectum



Pork Crown



Pork Bladder



Pork Pancreas



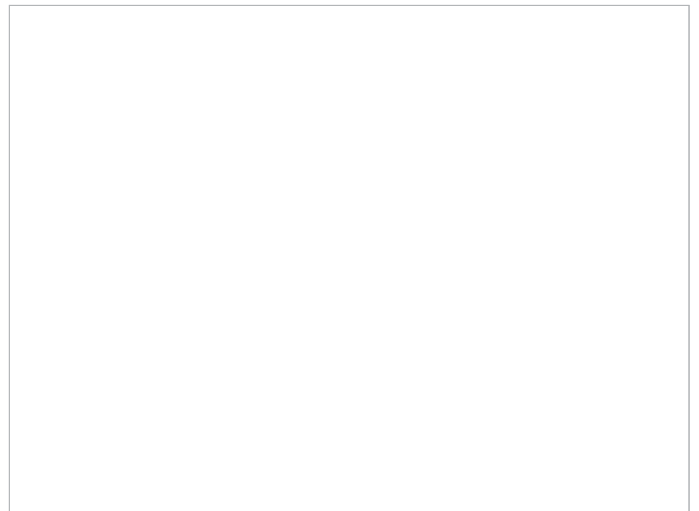
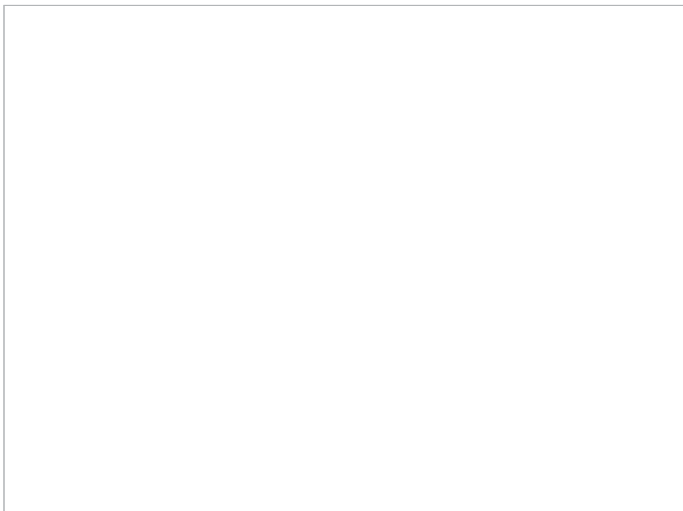
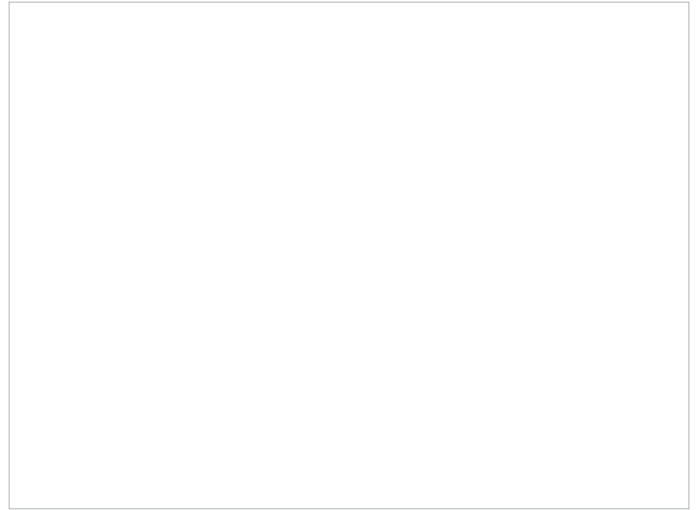
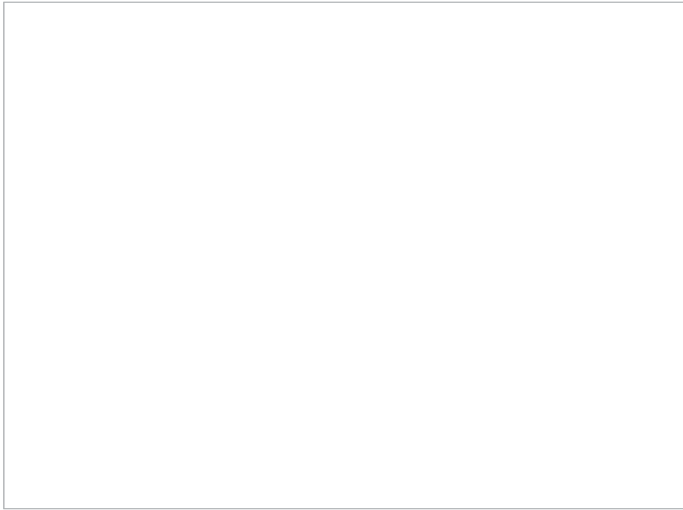
Pork Raw Casing



Pork Tubed Uteri



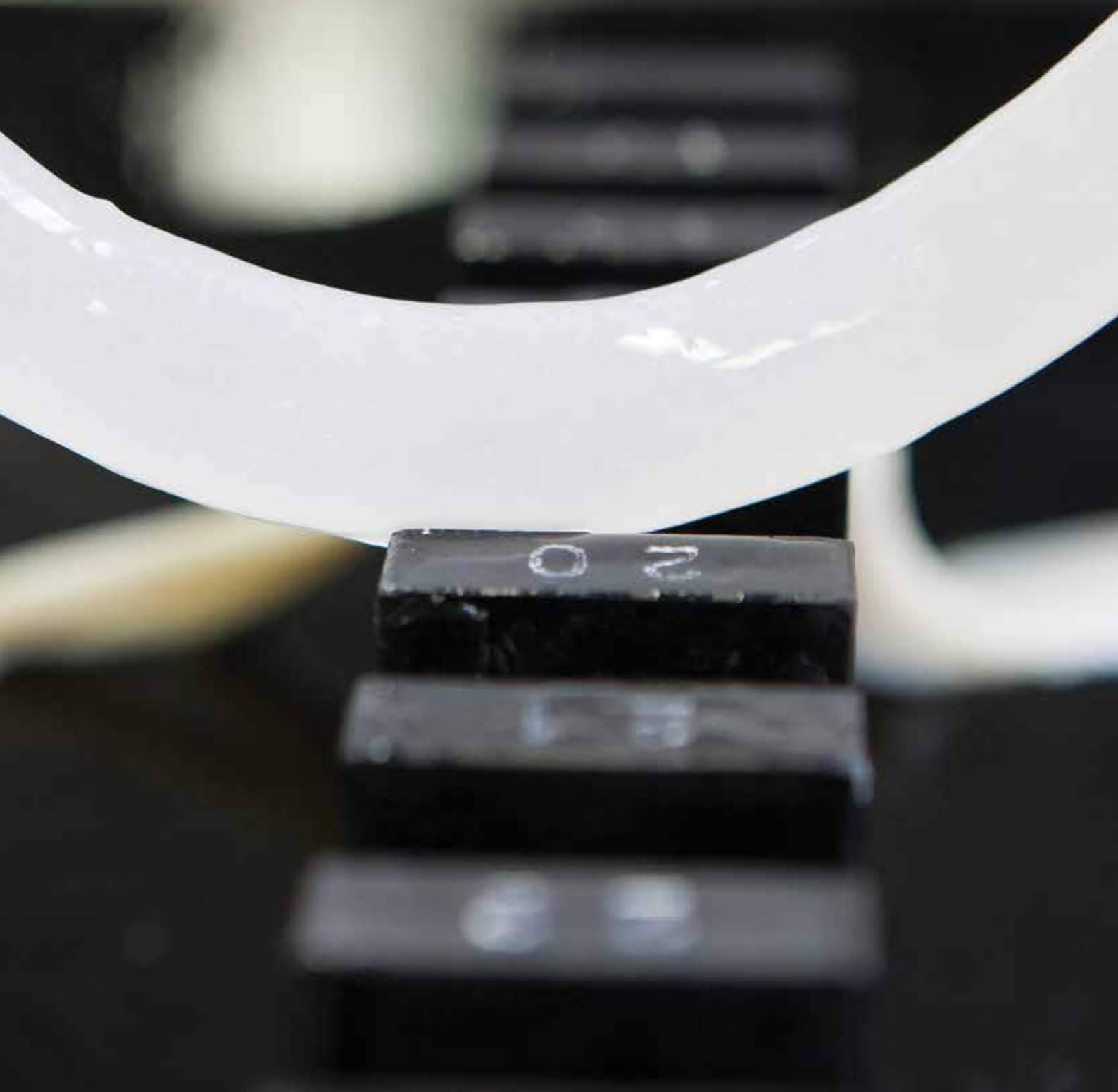
Pork Uteri without tube



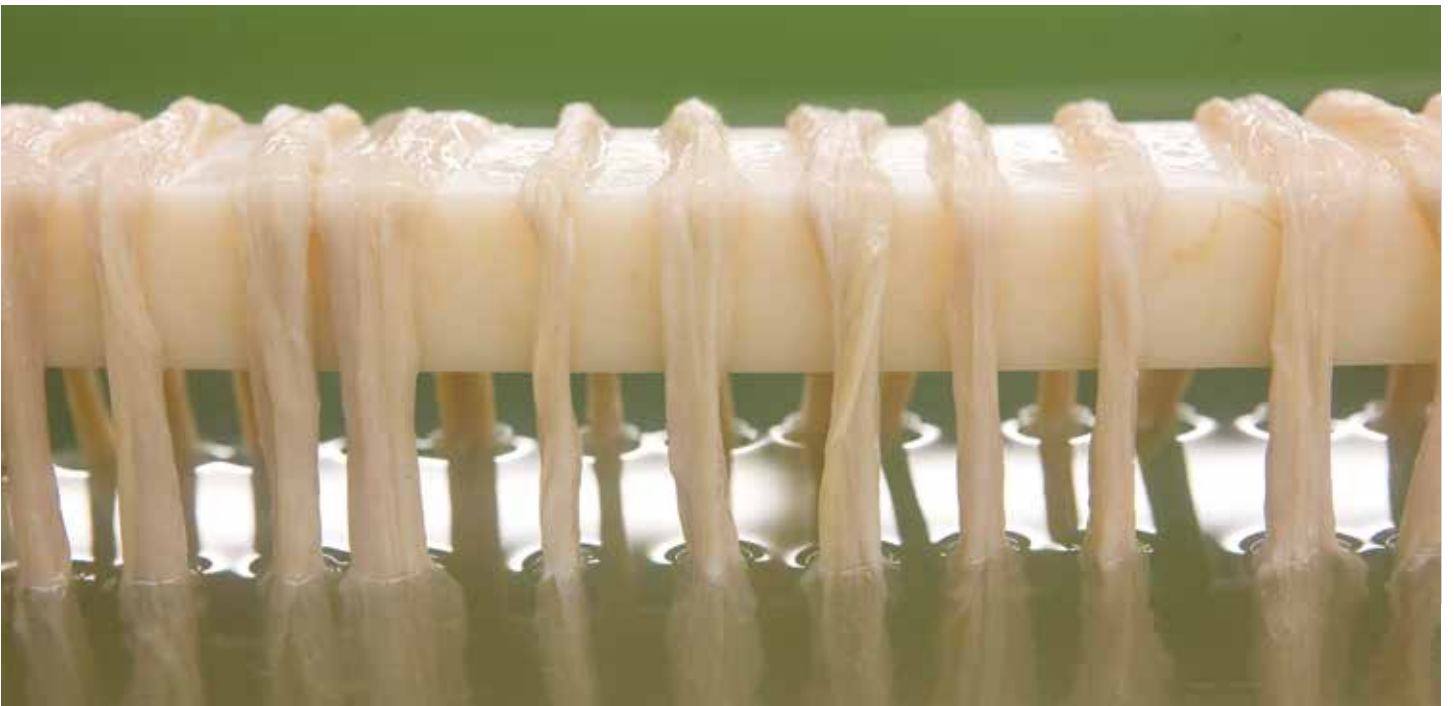
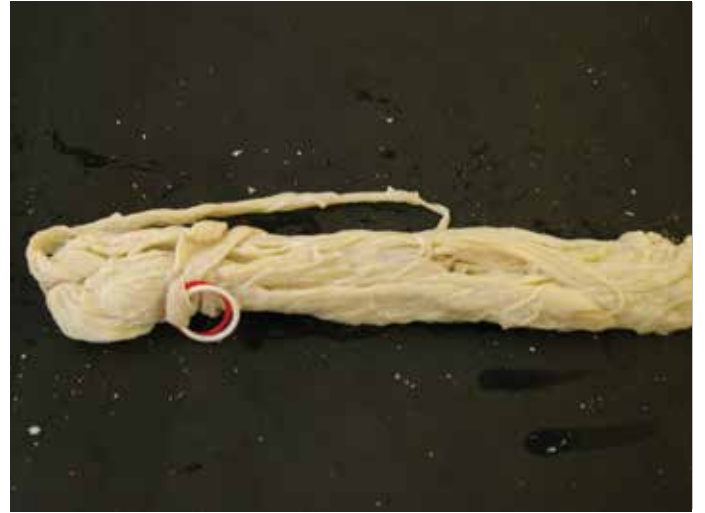


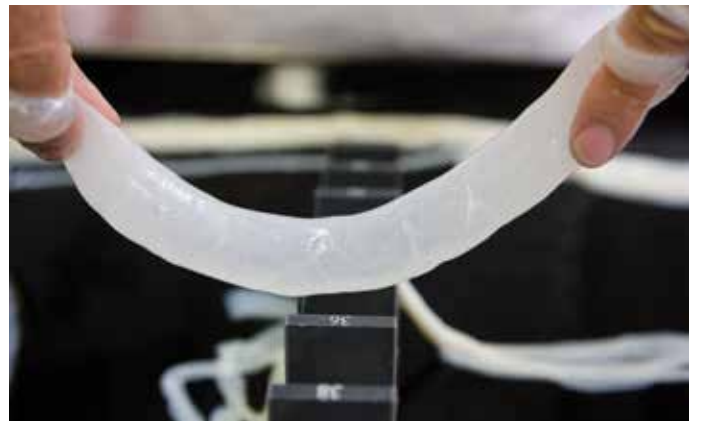
IRISH CASING COMPANY

CASINGS









SHEEP CASINGS	
Caliber	Approx. Stuffing Capacity Before Cooking
16 - 18mm	15-16kg
18 - 20mm	17 - 18kg
20 - 22mm	21- 23kg
22 - 24mm	25 - 27kg
24 - 26mm	27 - 29kg
26 - 28mm	29 - 31kg
28mm/up	31 - 34kg



Sheep Casing

SPOOLED SHEEP CASINGS
Spooled for quicker processing



Spoiled Sheep Casing

BEEF ROUNDS	
Average Approx. Diameter	Average Approx. Stuffing Capacity Per 30-Meter Set
35 - 38mm	30kg
38 - 40mm	33 - 34kg
40mm - 43mm	36 - 37kg
43 - 46mm	39 - 40kg
46mm/up	41kg/ up



Beef Rounds

HOG CASING	
Average Approx. Diameter	Average Approx. Capacity ^{per} Bundle
30/down	41kg/down
30 - 32mm	41 - 45kg
32 - 35mm	48 - 52kg
35 - 38mm	52 - 57kg
38 - 42mm	57 - 61kg
42 - 44mm	59 - 64kg
44mm/up	61 - 68kg



Hog Casing



**All
Natural
Casings**



INSCA



Notes

Notes



IRISH CASING
COMPANY

IRELAND

Spollanstown Ind. Estate,
Tullamore,
County Offaly,
Rep. of Ireland

Tel: 353-5793-21714,
Fax: 353-5793-51306,
Email: info@irishcasings.com
Web: www.irishcasings.com

GERMANY

RUDOLF MARTH
Inh. C. J. Kersting e.K.
Böttgerstr. 7, 38122
Braunschweig
Postfach 6780, 38058
Braunschweig

Tel: +49 0531 - 874101
Fax: +49 0531 - 872914
Email: info@marth.de
Web: www.marth.de

POLAND

Noworim Sp. z o.o.
ul. Sienkiewicza 7c
PL - 72-200 Nowogard,
Poland
Selectors for Sheep and
Hog-Casings, Tubing

Tel: +48 (91) 3922-394
Fax: +48 (91) 3922-018
Email: biuro@noworim.pl

ICELAND

Icelandic Byproducts Ltd,
Grimseyjargata,
600 Akureyri,
Iceland

Tel: +354 460 8850
Fax: +354 460 8854